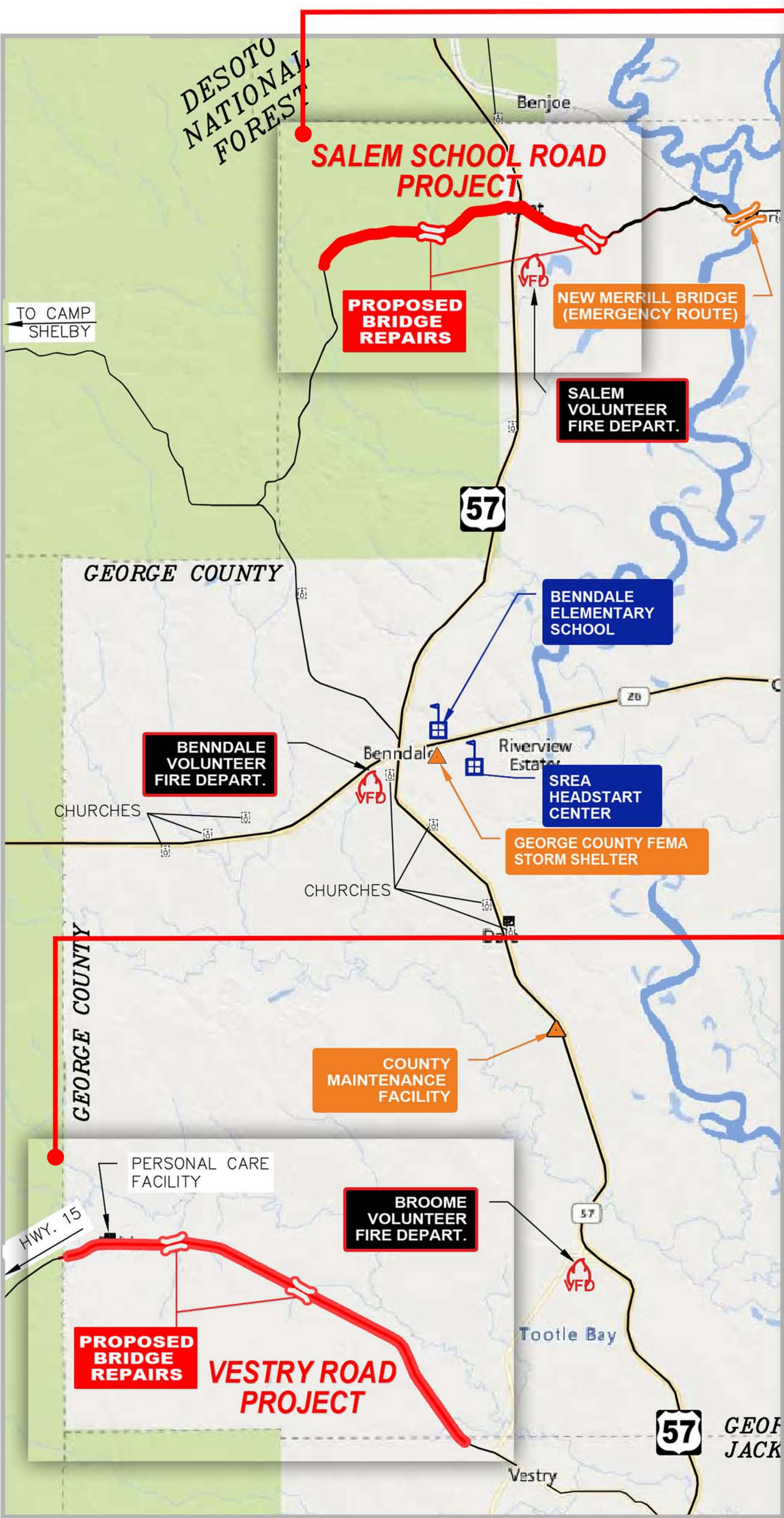


SALEM SCHOOL ROAD & VESTRY ROAD PROJECT

“Safe Streets for All” (SS4A)

2023 Federal Grant Program Application:

\$5,552,885 (Grant) + \$1,388,221 (County)= \$6,941,106



SALEM SCHOOL ROAD - PROPOSED PROJECT IMPROVMENTS:

Total Project Cost: \$3,477,405.94

Grant Funding Request: \$2,781,924.75

Obligation: County will obligate 20% match (\$695,481) and all grant funds can be obligated within 12 months of enactment.

Proposed Project:

This project will convert and upgrade three (3) miles of Salem School Road from a semi-paved gravel road to a fully paved two-lane asphalt road connecting drivers from MS Hwy. 57 to the new Merrill Bridge, US Forestry Route 307, Desoto National Forest, Camp Shelby Joint Forces Training Center, Leaf River Wildlife Preserve, and PHWDD's Flint Creek Water Park.

This road project comes at a critical time for Salem School Road. Current conditions present an elevated risk for a vehicle accident and are limiting the public's access to safely cross the Pascagoula River, an alternate emergency/evacuation route, rural school bus routes, and federal lands.

Preliminary engineering calls for widening Salem School Road to 20 feet (County standard), large-scale leveling, re-establishing a solid road foundation (base paving), forming roadway shoulders, erosion control, repairs on two (2) low weight bridges, two (2) bridge ingress/access improvements, and two (2) inches of asphalt paving. Road safety improvements are also critical elements of the project, including: continuous yellow and white lane striping, center reflectors, sharp turn warnings, and safety/object signage.

VESTRY ROAD - PROPOSED PROJECT IMPROVMENTS:

Total Project Cost: \$3,463,700.00

Grant Funding Request: \$2,770,960.00

Obligation: County will obligate 20% match (\$692,740) and all grant funds can be obligated within 12 months of enactment

Proposed Project:

The Vestry Road Widening and Paving Project will significantly improve seven (7) miles of narrow roadway directly connecting three counties (Jackson, George, and Stone) and two state highways together.

Vestry Road starts in rural Jackson County running north into the southwest edge of Stone County. The George County section is the "center piece" connecting both ends together. This connection provides direct access to DeSoto National Forrest, MS Hwy 57 (Jackson Co.) and MS Hwy. 15 (Stone Co.). Vestry Road has become a significant corridor for private property timber hauling businesses, a vital residential route for low-income families, and an "alternate" emergency/hurricane evacuation route.

Preliminary engineering calls for widening Vestry Road from 18 feet to 20 feet (County standard), leveling/base repairs, re-establishing and widening roadway shoulders, erosion control, repairs on two (2) low weight bridges, three (3) bridge ingress/access improvements, and two (2) inches of asphalt paving. Road safety improvements are also critical elements to the project, including: continuous yellow and white lane striping, center reflectors, sharp turn warnings, and school bus safety signage.

